

# **Optical Wavelength Laboratories (OWL) Calibration Procedures**

**Upgrading Micro OWL 2 Optical Power Meter Firmware**

**March 20, 2008**

# Calibration Procedure

## Upgrading Micro OWL 2 Optical Power Meter Firmware

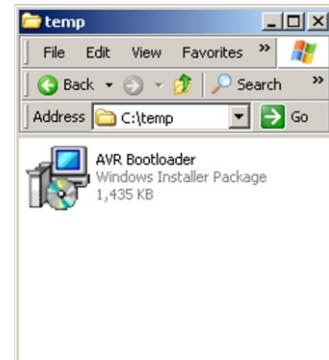
Use this procedure to upgrade the firmware in the Micro OWL 2 optical power meter to the most current version.

Requirements for this procedure:

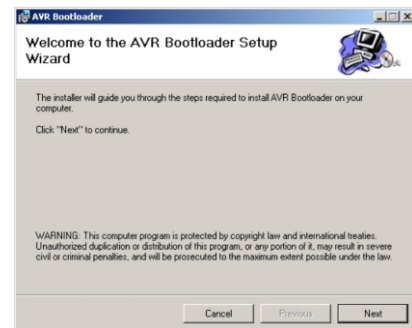
- PC with a working COM port
- Micro OWL 2 download cable

### INSTALL FLASH UPDATE PROGRAM

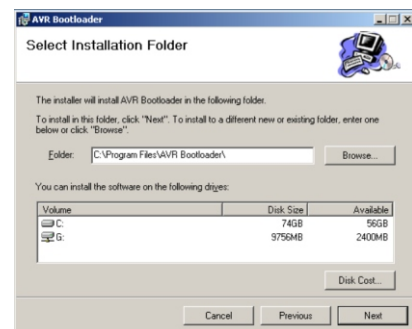
Step 1 – Open My Computer and browse to the folder where the AVR Bootloader install program is stored. Double-click the AVR Bootloader icon to start installation.



Step 2 – Click "Next".



Step 3 – Click "Next".

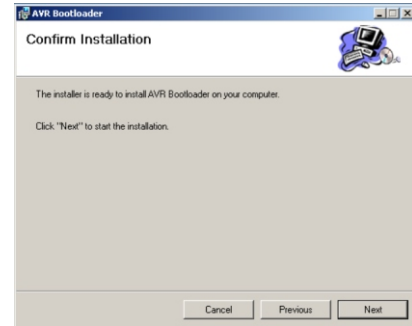


# Calibration Procedure

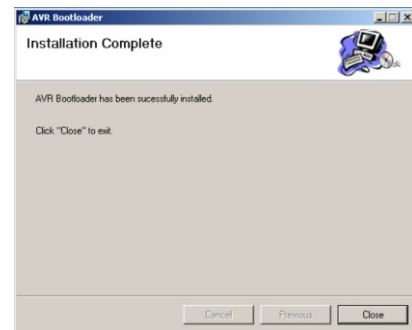
## Upgrading Micro OWL 2 Optical Power Meter Firmware

### INSTALL FLASH UPDATE PROGRAM, cont.

Step 4 – Click “Next”.



Step 5 – Click “Close” to complete the installation.



### SETUP

Step 6 – Connect the Micro OWL to the PC using the download cable and power on the meter.



# Calibration Procedure

## Upgrading Micro OWL 2 Optical Power Meter Firmware

### UPDATE MICRO OWL 2 FIRMWARE

Step 7 – Click Start, OWL update, AVR Bootloader.



Step 8 – Click “Jump to Bootloader then Download”. In the Status bar, there will be a countdown of the lines of code being downloaded into the Micro OWL 2. Once all of the firmware has been downloaded, You will receive a notification window showing successful completion.

NOTE: if there is no response from the target bootloader, either:  
a) use a different COM port; or  
b) verify COM1 is not in use; or  
c) remove and re-insert the battery in the Micro OWL 2, then power the Fiber OWL 4 back on,

then repeat Step 8.

