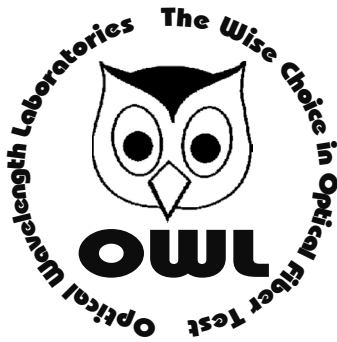


Fiber OWL Optical Power Meter Operations Guide



Optical Wavelength Laboratories

Table of Contents

Unit 1 - Introduction	
Why Use An Optical Fiber Power Meter?	1-1
Checking Your Fiber OWL Firmware Version	1-1
Description	1-2
Applications	1-2
General Features	1-3
Keyboard Entry Method	1-3
Modes of Operation	1-4
Unit 2 - Simple Meter	
Overview	2-1
Operation	2-1
Power On	2-1
Power Units	2-2
Wavelengths	2-2
"Zeroing" or Setting an Optical Reference	2-2
Monitor Mode	2-3
Meter Config Menu	2-3
Power Off	2-3
Unit 3 - Certification Meter	
Overview	3-1
Operation	3-1
Power On	3-1
Fiber Certification	3-1
Power Units	3-5
Wavelengths	3-5
Store Data Points	3-5
Fiber Link Menu	3-7
Stored Readings Menu	3-8
OWL Reporter Summary View	3-11
OWL Reporter Report Printing	3-12
Meter Properties Menu	3-12
Circuit Summary Printout	3-13
Take Readings	3-14
Power Off	3-14
Unit 4 - Appendices	
Appendix A - Decibel Review	4-1
Appendix B - Dynamic Range Review	4-2
Appendix C - Glossary	4-3
Appendix D - Fiber OWL Specifications	4-6
Appendix E - Warranty Information	4-7
Appendix F - Cleaning and Care Instructions	4-7
Appendix G - Supported Cabling Standards	4-8
Link Budget Calculation Worksheet	4-9

Why Use An Optical Fiber Power Meter?

Standards organizations such as the TIA or the ISO/IEC provide performance standards that the cabling plant must adhere to in order to support high-speed protocols such as Gigabit Ethernet. Fiber can be tested against these standards, ensuring that it is able to handle the high amount of traffic with a maximum amount of reliability.

These standards organizations also provide standards for administration of the cabling plant. These standards require a fiber link to be certified; that is, a report must be generated from appropriate test equipment for tracking and auditing purposes. These reports can also be used as verification of compliance to performance standards in case a question comes up about the quality of an installation. These signed documents cover the installer from liability provided that the link meets specified performance standards.

Our optical fiber power meters are designed with these standards in mind because we understand the importance of qualifying your fiber installations with standards-compliant test equipment. The meter you have just purchased also prints professionally formatted reports showing the conformity to these popular industry standards. You can print out these reports as a record of the original conformity to quality set by the standards. These documents signed by all associated parties may prove valuable in any future disputes concerning the installation.

Checking Your Fiber OWL Firmware Version

This manual is written for the Fiber OWL firmware version 2.00 and later. It is not valid for previously released Fiber OWL versions. Follow the instructions below to verify your firmware version.

- 1 - Press **ON** to start up the meter.
- 2 - After the owl flies across the initial boot-up screen, your display should look like the diagram below. This screen only remains viewable for approximately 2 seconds.

If the firmware version is not V2.00 or later, check our website at OWL-INC.COM for the correct version of the manual.



Description

The Fiber OWL is a high accuracy, high resolution, microprocessor controlled, optical power meter. The meter has a wide dynamic range making it ideal for both single and multi-mode fiber testing.

It has an attractive handheld case made from high impact Valox™ plastic, a large, backlit, graphic, liquid crystal display, and 18-key keypad for easy data entry. The universal fiber adapter accepts ST, SC, and FC connectors. It will operate for over 200 hrs on a standard 9v battery and has built in auto shutdown.

The Fiber OWL includes a built-in link wizard that helps you easily calculate the allowable loss for the fiber runs that you will be measuring. The meter stores physical fiber information for up to eight links. Link information includes: link name, date, fiber type, fiber length, connectors, splices, temperature, and calculated or entered reference power values for six wavelengths. In addition the meter will store up to 900 measured data points with labels. Each value includes the fiber type and link.

The stored information can be selectively viewed, edited (measured again), printed, or deleted. The meter will print formatted reports of selected stored data directly using the built in serial port, or all of the stored data can be downloaded to a computer spreadsheet or our free OWL Reporter software to produce professional-looking formatted certification reports.

Applications

Attenuation Measurements. After a fiber cable has been installed and terminated, it must be tested to determine if the fiber is installed according to standards and specifications. A comparison of the actual power measurement and the reference value determines if the installation will pass or fail.

Fiber Network Certification Using Various Cabling Standards. The Fiber OWL uses a loss wizard that is used for fiber certification against several cabling standards. The user is prompted to choose a standard, which allows the Fiber OWL to calculate a certification reference value for that standard and store it in the meter. As the user stores data points in the meter using the loss wizard, the actual power level of the link is also stored. The data is then downloaded into our OWL Reporter software, where the actual power value is compared to the reference value. Certification reports can be printed out with details or summaries of the fibers being certified.

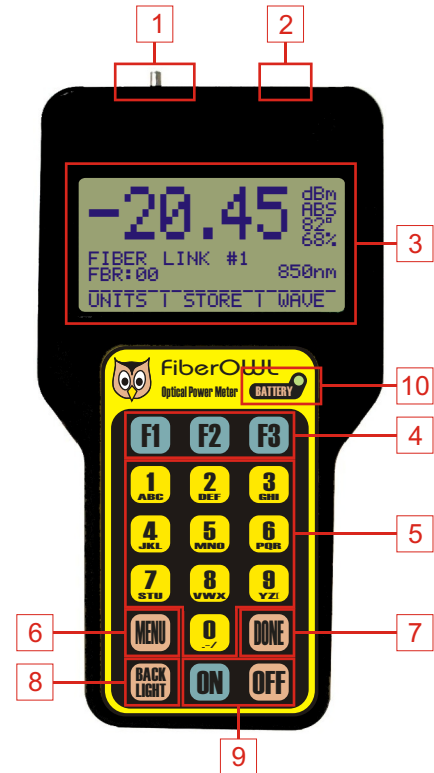
Fiber Continuity Testing. Continuity can be measured with the Fiber OWL by placing a calibrated light source on one end of the fiber and the Fiber OWL on the other end. This is also a simple way to measure the attenuation of the fiber.

Patch Cord Testing. Fiber links that are producing incorrect results may have bad patch cords. The Fiber OWL can be used to test the attenuation of a patch cord to see if it is usable, or should be replaced.

Active Equipment Optical Power Measurements. Active equipment needs to be measured periodically for correct power levels and stability. The transmitters in this equipment have a known power value. The Fiber OWL can be directly attached to this equipment via a patch cord to check whether the transmitter is stable and is within the manufacturer's specified power range.

General Features

- 1 2.5mm UNIVERSAL ADAPTER PORT - accepts all standard 2.5mm ferrule connectors (ST, SC, FC, plus others).
- 2 COMPUTER PORT - port for downloading data from the meter to a PC via serial cable.
- 3 LIQUID CRYSTAL DISPLAY (LCD) - displays power readings, menus, and information necessary for operation of the meter. The elements of the display are discussed in later units.
- 4 FUNCTION KEYS - activate the options on the Function Options Menu.
- 5 ALPHA-NUMERIC KEYS - enter letters, numbers, and symbols into field prompts.
- 6 MENU KEY - used to enter the menu system.
- 7 DONE KEY - activates certain menu options.
- 8 BACK LIGHT KEY - toggles the LCD back light ON or OFF.
- 9 ON/OFF KEYS - turns the meter ON or OFF.
- 10 BATTERY INDICATOR LED - indicates when the battery no longer has enough power to operate reliably. When this LED is lit, it is time to replace the battery.



Keyboard Entry Method

Several screens in the Fiber OWL menu system require the user to enter some input, e.g. A fiber length measurement or a descriptive name for a fiber run. This feature allows the Fiber OWL to be more user-friendly.

Alpha-numeric Fields. These fields allow the user to enter either a number, a letter, or a special character. This is accomplished by pressing and holding the key until the desired character appears. When the key is released, the cursor automatically advances to the next position.

Numeric Fields. These fields are for numeric input only, e.g. fiber length, user-defined reference values, etc. The cursor will automatically advance once a number key is pressed. Exception: some numeric operators may be required, such as the minus sign or a decimal point. The **0** contains special characters. In this case, they are treated like alpha-numeric fields.

Press the **DONE** key when character input is complete.

Modes of Operation

As an added convenience, the Fiber OWL has been designed to operate as two different types of meters: Simple Meter and Certification Meter.

Simple Meter. Simple Meter is used for simple optical power or attenuation measurements, and when fiber certification and data storage is not necessary. Users may set up temporary reference values for each wavelength for quick PASS/FAIL readings. Simple Meter is covered in more detail in Unit 2.

Certification Meter. Certification Meter offers a user-friendly and powerful fiber optic network certification tool. Fibers can be certified against one of many popular national or international cabling standards, as well as against user-defined standards. Up to 900 data points can be stored for download to a PC. OWL Reporter software organizes and formats these data points, and prints them into professional-looking certification reports. Certification Meter is covered in more detail in Unit 3.

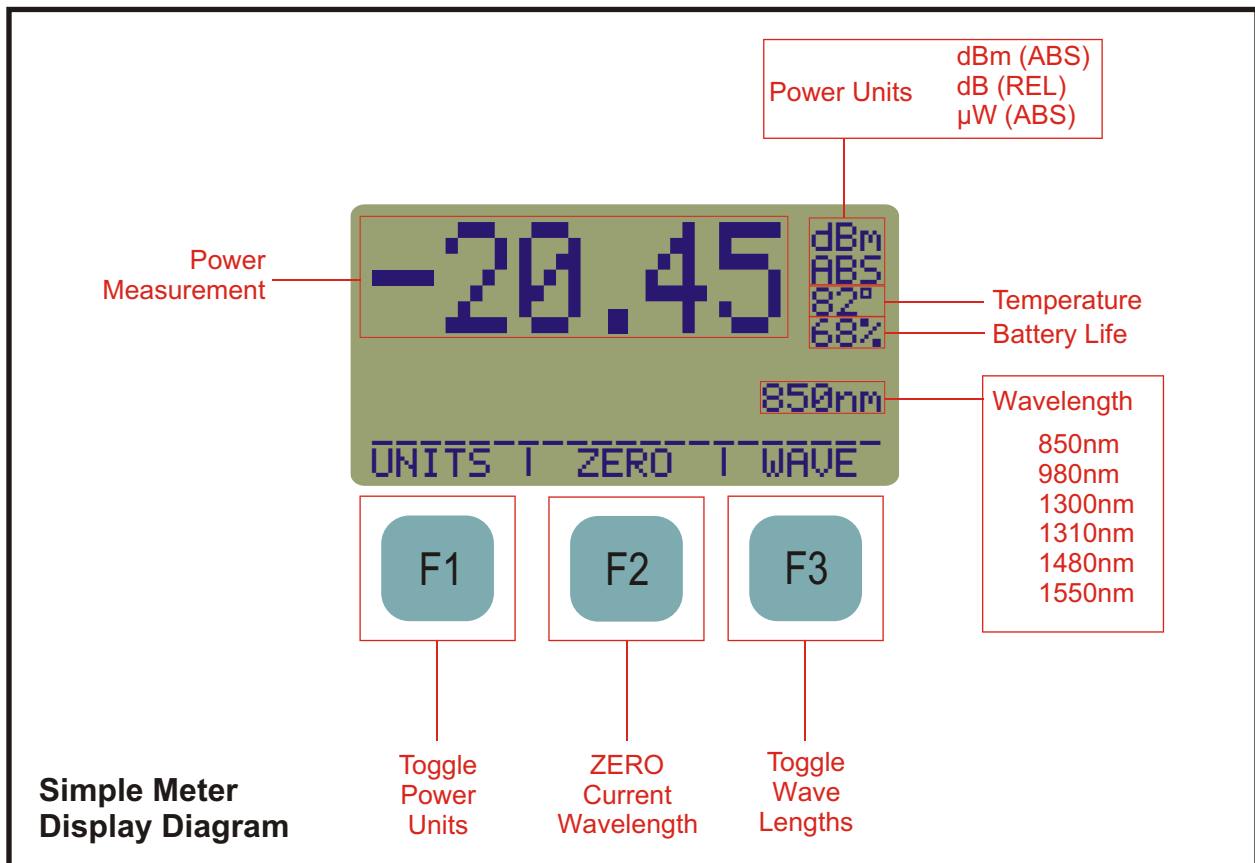
Overview

Simple Meter is a mode within the Fiber OWL that allows the user to quickly and easily display the attenuation of a fiber link. This mode is used when only the most basic functions are required: fiber loss measurement, optical power measurement, and fiber link monitoring.

Operation

Power On

- 1 - Press the **ON** button.
- 2 - After a few seconds, you will be prompted to choose an operating mode. When "SIMPLE METER" is highlighted press **F2** to select.
- 3 - You are now ready to take fiber measurements.



Operation, cont.

Power Units

The Fiber OWL is capable of displaying power readings in three different units. The user may toggle through these units by pressing **F1** :

dBm (ABS). This is an absolute (ABS) power measurement. It shows how much optical power is being received by the photodetector in decibels referenced to a milliwatt (dBm).

dB (REL). This is a relative (REL) power measurement. It shows the amount of optical power being received by the photodetector relative to a user-defined reference power (i.e. “zeroing” the meter). If a reference value has been set, toggling to REL mode will show the user how much optical power is being lost in the link.

μW (ABS). This is an absolute (ABS) power measurement. It shows the amount of optical power being received by the photodetector in microwatts, or millionths of a watt.

Wavelengths

Measurements can be taken for six different wavelengths in the Fiber OWL. These wavelengths are 850, 980, 1300, 1310, 1480, and 1550nm. All but 1480nm are traceable to the National Institute of Standards and Technology (NIST). The user may toggle through these wavelengths by pressing **F3** .

“Zeroing” or Setting an Optical Reference

This function allows the user to set references for each wavelength for fiber attenuation testing.

After connecting a light source to the Fiber OWL:

1 - Toggle the wavelength until it matches the wavelength of the source.

2 - Press **F2** to zero the meter. The user will be prompted to verify the set reference.

3 - Press either **F1** to set the reference, or **F3** to cancel.

NOTE: When using laser sources, allow the laser to warm up according to the manufacturer specifications to ensure accurate references.

NOTE: You may also zero the meter by pressing **0** .



F2

Operation, cont.

Monitor Mode

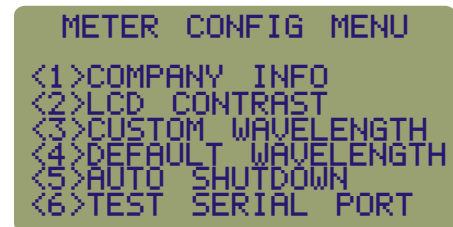
Monitor Mode sends absolute power measurements in a comma delimited format to the serial port in real time. A terminal program is required to view data in real time.

To enter Monitor Mode, press **5** MNO. Press **DONE** to exit Monitor Mode.



Meter Config Menu

Meter properties can be configured from the METER CONFIG MENU. Press **MENU** to enter the menu.



<1>COMPANY INFO **1** ABC This option allows the user to change the company name and company telephone number.

<2>LCD CONTRAST **2** DEF This option adjusts the LCD contrast for better readability.

<3>CUSTOM WAVELENGTH **3** GHI This option allows the user to configure the Fiber OWL with a light source wavelength that is not supported by the Fiber OWL. The custom wavelength must be between 700nm and 1700nm. **NOTE: setting the custom wavelength temporarily overwrites 1480nm wavelength.**

<4>DEFAULT WAVELENGTH **4** JKL This option resets the default wavelength to 1480nm if a custom wavelength has been configured.

<5>AUTO SHUTDOWN **5** MNO This options allows the user to toggle the Auto Shutdown feature between ON and OFF. By default, Auto Shutdown is ON, and is approximately 10 minutes.

<6>TEST SERIAL PORT **6** PQR This option is used to diagnose problems with the serial cable included with the meter. If the meter cannot download to the PC, this option tests the meter's serial port and download cable. If these tests run okay, there may be a problem with the PC's COM ports.

Power Off

Press **OFF** to shut down the Fiber OWL. The user will be prompted to verify shutdown.

Overview

Certification Meter allows the user to store data points for the purpose of certifying fiber links against known industry cabling standards; EIA/TIA 568, ISO/IEC 11801, and Gigabit Ethernet are some examples. A user-friendly link configuration wizard is provided to enter fiber link parameters, which is used to calculate reference values for easy PASS/FAIL readings.

The Fiber OWL is capable of certifying up to 900 data points with user-configurable fiber labels, and can certify eight separate fiber links against one of ten pre-defined standards or two user-defined standards.

Data points are downloaded into our free OWL Reporter Windows-compatible software for organizing data points and printing professional-looking certification reports.

Operation

Power On

1 - Press the **ON** button.

2 - After a few seconds, you will be prompted to choose an operating mode. When "CERTIFICATION METER" is highlighted, press **F2** to select.

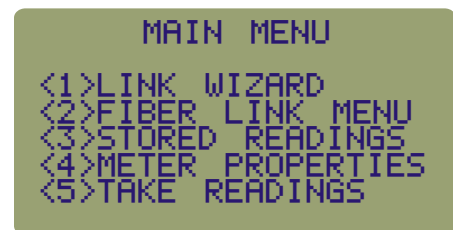
3 - You are now at the MAIN MENU. All operations in CERTIFICATION METER branch from this menu.

NOTE: you may also press **MENU** at any time to enter the MAIN MENU.

Fiber Certification

The following steps outline the procedure for setting up the Fiber OWL for fiber certification. This process begins with running the Link Wizard.

Definition of a link. In the Fiber OWL, a link is defined as any number of fibers, or fiber runs, that all have the same set of fiber characteristics from one end to the other; typically begin together and end together; and follow the same pathway. These characteristics include fiber length, fiber type, connector loss, and splice loss, as well as the cabling standard being used for fiber certification. **NOTE: Any time one of these fiber characteristics changes, a new link must be configured.** The link wizard uses these characteristics to calculate a reference value which all fibers included in the link are measured against.



1 - Press **1** to start the LINK WIZARD.

2 - At the STORED LINKS menu, highlight the link name you wish to use. The currently loaded link is denoted by an asterisk. If you have already configured a link, press **F2** to continue to Step 3. Otherwise, press **F3** to edit the selected link.

Fiber Certification, cont.

EDIT LINK

2a - Give the link a descriptive name. Press **F1** to edit the name. Press **DONE** to continue.

2b - Enter the date of the test. Press **F2** to enter the date. Press **DONE** to continue.

2c - When the name and date have been entered, press **DONE** to continue.

3 - Press **1** ABC to USE A STANDARD TO CERTIFY LINK. Options 2 and 3 are for advanced users only. For instructions on options 2 and 3, see the section on CONFIGURE LINK from the FIBER LINK menu.

4 - Scroll through the list of standards, and highlight the standard you wish to use. If you wish to use a pre-defined standard, press **F2** to continue to step 5. Otherwise, highlight one of the user-defined standards and press **F3** to edit the chosen user-defined standard.

CONFIGURE USER-DEFINED STANDARD

Selected wavelengths for user-defined standards are denoted by asterisks. Up to two wavelengths may be selected. **NOTE: the same wavelength cannot be chosen twice.**

4a - Highlight the first wavelength you wish to use, and press **F2** to select.

4b - Enter the loss in dB/km for 62.5 uM multimode fiber, and press **DONE** to continue.

4c - Enter the loss in dB/km for 50.0 uM multimode fiber, and press **DONE** to continue.

4d - Enter the loss in dB/km for inside plant single-mode fiber, and press **DONE** to continue.

4e - Enter the loss in dB/km for outside plant single-mode fiber, and press **DONE** to continue.

4f - Enter the loss in dB per connector, and press **DONE** to continue.

4g - Enter the loss in dB per splice, and press **DONE** to continue.

4h - If a second wavelength needs to be configured, highlight a different wavelength, then press **F3** to select the second wavelength. Otherwise, press **DONE** to continue to Step 5.

4i - Repeat steps 4b to 4g for the second wavelength. When completed, press **DONE** to continue.

5 - Press **F2** to select the fiber standard.

6 - Highlight the desired fiber type, then press **F2** select the type of fiber you will be testing.

7 - Enter the length of the fiber you are testing in meters and press **DONE** to continue.

8 - Enter the number of inline connections in the link you are testing and press **DONE** to continue.

9 - Enter the number of splices in the link you are testing and press **DONE** to continue.

Fiber Certification, cont.

10 - You will be prompted to connect a light source for the first wavelength of cabling standard you have chosen. Press **DONE** once the appropriate light source is attached.

NOTE: Make sure that the source is stable by allowing it sufficient time to warm up.

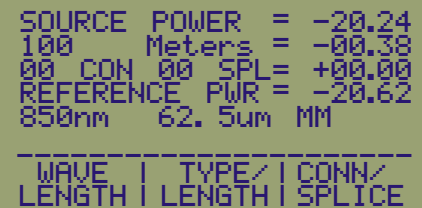
NOTE: In order to maintain the integrity of the reference you are setting, it is critical to leave the patch cord connected to the light source. Disconnection of a patch cord from a light source will invalidate your reference due to the inaccuracies in aligning the light source with the fiber core.

NOTE: In order to set an accurate reference for multimode fibers at 850 or 1300nm, the user must wrap the reference patch cord around a mandrel. The mandrel should be approximately 1/2" in diameter, and the patch cord should be wrapped 5 to 7 times around the mandrel. The mandrel is necessary for stripping off the optical energy that does not normally travel down the fiber link. If this energy is not removed from the reference value, your fiber readings will be too low, and may cause the link to appear as if it was failing.

11 - The settings you just entered will appear on the display.

SOURCE POWER (shown in dBm) - actual power your light source is emitting.

100 Meters (shown in dB) - attenuation value associated with the length and type of fiber you entered. At times, an asterisk will appear here. This means that the length for the standard has been exceeded.



```
SOURCE POWER = -20.24
100 Meters = -00.38
00 CON 00 SPL = +00.00
REFERENCE PWR = -20.62
850nm 62.5um MM

-----
WAVE | TYPE | CONN |
LENGTH | LENGTH | SPLICE
```

00 CON 00 SPL (shown in dB) - attenuation value of the connectors and splices you entered.

REFERENCE PWR (shown in dBm) - source power plus fiber attenuation plus connector and splice attenuation. This is the PASS / FAIL threshold.

850nm - wavelength that the reference is being set for.

62.5 uM MM - fiber type that the reference is being set for.

From this screen, the user is given to opportunity to change link characteristics in the case of input error.

11a - To change the fiber type or fiber length, press **F2**. The user will be asked to repeat steps 6 and 7, and will be prompted to connect a light source as in step 10.

11b - To change the number of connectors or splices, press **F3**. The user will be asked to repeat steps 8 through 10.

12 - If the chosen standard allows or requires the user to test at a second wavelength, press **F1**. The user will be asked to verify the setting of the first wavelength's reference, then will be prompted to connect a light source for the second wavelength (see step 10). Otherwise, skip to step 13.

UNIT 3 Certification Meter

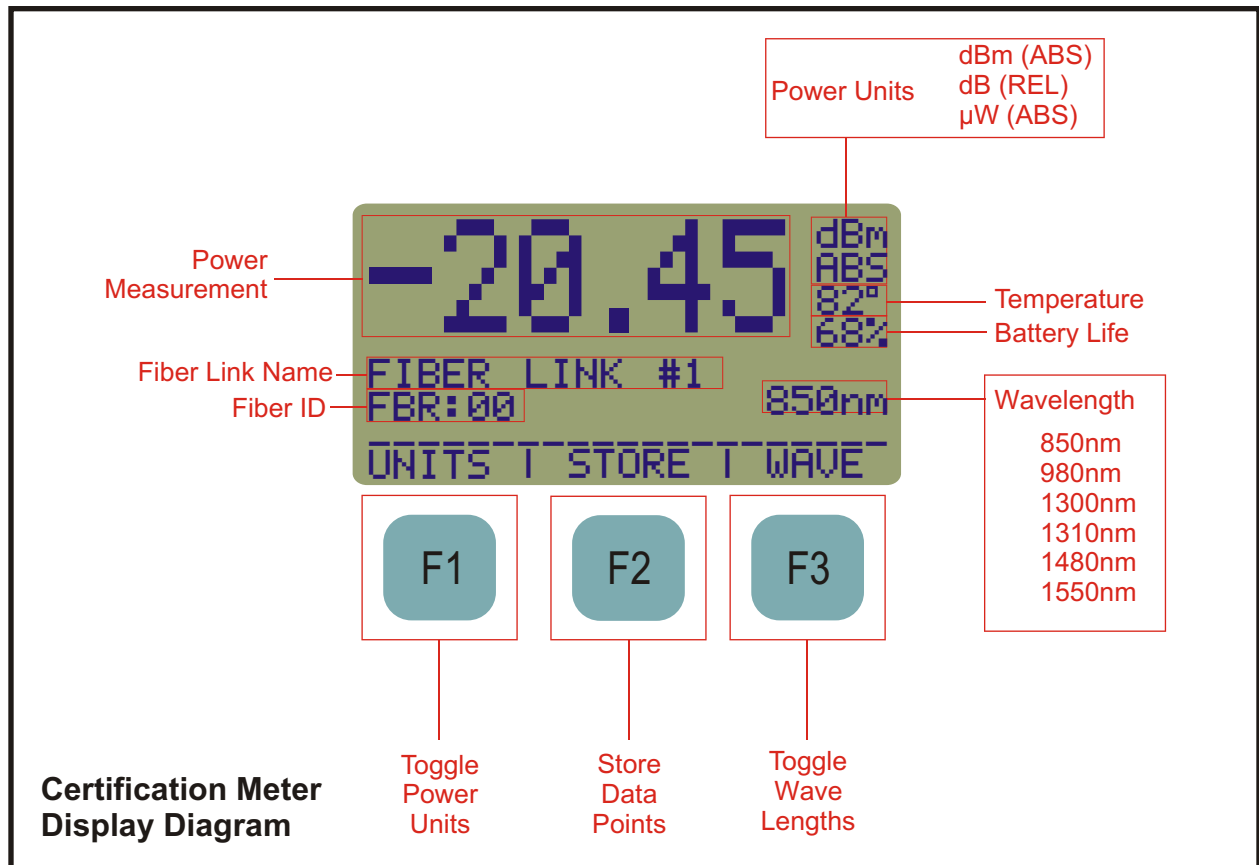
Fiber Certification, cont.

13 - Press **DONE** to continue. The user will be asked to verify the setting of a wavelength reference.

13a - If references have been previously set for this link, the user will be prompted to replace the old value with the recently set reference.

13b - If the chosen standard allows a second wavelength, the user will be given the option of setting a reference for that wavelength.

14 - The user will be given the option to either begin taking readings for the configured link (press **F1**), or return to the main menu (press **F3**). The screen below will appear if you begin taking readings.



Power Units

The Fiber OWL is capable of displaying power readings in three different units. The user may toggle through these units by pressing **F1** :

dBm (ABS). This is an absolute (ABS) power measurement. It shows how much optical power is being received by the photodetector in decibels referenced to a milliwatt (dBm).

dB (REL). This is a relative (REL) power measurement. It shows the amount of optical power being received by the photodetector relative to the reference set by the Link Wizard. REL mode is used to display PASS or FAIL, shows the user how much the link is passing or failing by, and shows the amount of loss in the link.

This display will only appear in REL mode after the link wizard has been run and configured with a standard. The large number (-2.45) shows the actual loss in the link, and 'PASS BY 1.24' tells the user if the link passes or fails according to the standard and by how much in dB. In this example, 2.45 dB is being lost across the link, and has a PASS margin of 1.24 dB.

μW (ABS). This is an absolute (ABS) power measurement. It shows the amount of optical power being received by the photodetector in microwatts, or millionths of a watt.



Wavelengths

Measurements can be taken for six different wavelengths in the Fiber OWL. These wavelengths are 850, 980, 1300, 1310, 1480, and 1550nm. All but 980nm and 1480nm are traceable to the National Institute of Standards and Technology (NIST). The user may toggle through these wavelengths by pressing **F3** .

Store Data Points

Once the user has configured a fiber link using the Link Wizard, readings may be stored in the meter. Disconnect the patch cord from the meter, and take the light source, with the reference patch cord still attached, to the other end of the fiber links you are testing. Set the meter and the light source to the same wavelength. Once this is done, follow the steps below.

1 - Press **F2** to begin storing a value.

2 - You may be prompted to enter a label. This label is provided to give the set of fibers you are testing a descriptive name. For example, there are three patch panels with 24 fibers in each to be tested. You could name the first one PP-A, the second one PP-B, and the third one PP-C. There is no need to enter the fiber number (e.g. Fiber01, Fiber02, etc.) The Fiber OWL automatically appends a two-digit auto-incremented number to the end of the fiber label you enter. In our example, for Patch Panel A, the data points would begin with PP-A00 and end with PP-A23. If you wish to have your data points start at 01, save dummy data for data point 00, then delete it once it is downloaded into OWL Reporter.

Store Data Points, cont.

There are two scenarios where you will be prompted to enter a label name: A) if this is the very first data point for this link, or B) if the auto-increment number reaches 00 again (i.e. if you have saved 100 data points for this label). For Scenario B, **F2** (SAVE) is disabled, and you will not be allowed to save data points until the label has been changed. It is suggested to put the first digit of the set of hundreds immediately after the fiber label (e.g. PP-A0 for data points PP-A000 to PP-A099, and PP-A1 for data points PPA-100 through PPA-199). If you are planning to save more than 100 data points for a single fiber label, this labeling scheme is highly recommended for proper data sorting in OWL Reporter software. Press **DONE** to continue.

```
FIBER LINK #2
NAME = FBR:00
TYPE = 62.5um MM
dBm = -22.05 850nm
-----
PRINT | EDIT |
DATA | NAME | SAVE
```

3 - The screen at right shows the pertinent information about the data point you are storing.

FIBER LINK #2 - the name of the fiber link chosen during Link Wizard.

NAME - the name of the fiber label chosen in step 2, with the two digit auto-increment number appended at the end. If you are storing data for multiple wavelengths, this label applies to all wavelengths associated with the chosen standard (e.g. 850nm and 1300nm for TIA-568B).

TYPE - the currently selected link's fiber type.

dBm - the absolute power in dBm being received by the detector. This number is compared to the reference value to determine if the link passes or fails; i.e. if this number is less than the reference value, the link fails, or if it is greater, the link passes.

850nm - the currently selected wavelength.

PRINT DATA F1 - sends the data point to the serial port in a printable format.

EDIT NAME F2 - repeat step 2. Use this function if you reach 00 on the auto-increment number, or if you wish to start a new label. Using the example on the previous page, if you have completed testing the fibers in Patch Panel A, you will move on to Patch Panel B. In this case you would EDIT NAME to say PP-B. Your auto-increment numbers would then be PP-B00 to PP-B23.

SAVE F3 - saves the data point in memory and returns you to the power reading display.

Press **F3** to save the data point. Repeat steps 1 and 3 for each data point you are saving for this Fiber Link.

FIBER LINK MENU

Option 2 from the MAIN MENU takes the user to the FIBER LINK MENU.

<1>LOAD/EDIT LINK - edit the name and date of a link and/or load the link. See Steps 2 and 3 in the section on Fiber Certification. Loading a link that already has data stored for it will cause the meter to resume storing where it previously left off.

<2>CONFIGURE LINK - set the link properties and reference values prior to storing data for that link. Remember to connect a light source to the meter prior to setting a reference. After selecting the link to configure, there are three configuration options. **NOTE: options 2 and 3 should only be used if the user has a firm grasp on how to calculate link budgets and manual references.**

Option 1 is the same as running the Standards Wizard. Consult the section on Fiber Certification for instructions.

Option 2 allows the user to set a Manual Reference for each wavelength. This reference can be set one of two ways: LINK BUDGET **F2** - the user is prompted to enter the maximum amount of loss (in dB) that the link is allowed to lose. This number is then added to the light source power to arrive at the reference value. MANUAL REF **F3** - the user is prompted to enter the reference value (in dBm) manually.

Option 3 allows the user to ZERO out the light source; i.e. set the light source power as the reference value.

Pressing **DONE** after completing these options will return the user to the FIBER LINK MENU.

<3>VIEW LINK CONFIG - views the parameters that are used to calculate the link reference value(s) when set with the Standards Wizard. The display at the right shows a typical link configuration screen.

FIBER LINK #1 - the link name.

TIA-568B / CAN-T529 - the standard used.

FIBER - the fiber type of the currently selected link.

LENGTH - length of the fiber link in meters.

2 CONN 0 SPLICES - number of connector pairs and splices in the link.

WAVELENGTHS: shows which wavelengths have references set. In the example, 850 and 1300nm have reference values set for this link.

<4>DELETE LINK - allows the user to clear out the properties and all data points set for the selected link.

<5>PRINT LINK - sends the link properties to the serial port in a printable format.

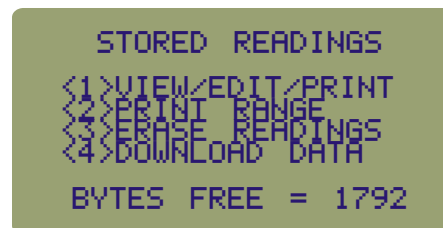
FIBER LINK MENU

```
<1>LOAD/EDIT LINK
<2>CONFIGURE LINK
<3>VIEW LINK CONFIG
<4>DELETE LINK
<5>PRINT LINK
```

```
FIBER LINK #1
TIA-568B / CAN-T529
FIBER = 62.5um MM
LENGTH = 1000 METERS
2 CONN 0 SPLICES
WAVELENGTHS:
850nm 1300nm
```


STORED READINGS MENU

Once you have your data stored in the meter's memory, there are several things you can do with them. We have already discussed downloading the data into our OWL Reporter software. This is by far the easiest way to manage your data and to format it into a professional looking report.



The Fiber OWL can also manipulate this stored data without the use of OWL Reporter. Stored readings can be dumped out to the on-board serial port to a PC terminal program, or printed to a serial printer.

<1>VIEW/EDIT/PRINT - You may view, edit, or print any record.

<2>PRINT RANGE - Print a range of values based on the current fiber label.

<3>DELETE READINGS - delete a range of stored readings, or all stored readings.


<4>DOWNLOAD - Download data points into OWL Reporter, or in comma-delimited format to a terminal program.

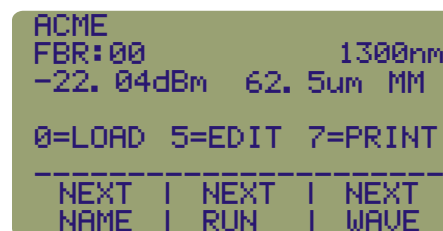
BYTES FREE - Shows how many bytes remain for data storage. The meter has 1792 bytes of storage. This amount of RAM is sufficient to store up to 900 data points.

If, at any time, there are no data stored in the meter, a notification screen will appear telling the user there is "NO STORED READINGS" and will return to the STORED READINGS menu.

At any time while at the STORED READINGS menu, press  to return to the MAIN MENU.

STORED READINGS MENU - OPTION 1: VIEW/EDIT/PRINT

Press . This screen displays the information about a stored data point.



ACME - link name.

FBR:00 - fiber label and two-digit auto-increment number.

1300nm - wavelength.

-22.04dBm - absolute power level.

TYPE=M6 - fiber type code.

STORED READINGS MENU - OPTION 1: VIEW/EDIT/PRINT, cont.

NEXT NAME **F1** - toggles through all of the Run Labels for all stored links. Toggling between run labels brings up the very first data point for that run label.

NEXT RUN **F2** - toggles through all of the run numbers associated with the current run label. The wavelength does not change when toggling through run numbers.

NEXT WAVE **F3** - toggles through the wavelengths associated with the current run label and number.

LOAD **0** - this option is used to allow the user to resume taking readings starting with the next fiber run number of the currently displayed fiber label. For example, the fiber label FBR: will have 24 fibers total, but only the first 12 have been saved. The user can use this option to load FBR: and the meter will send the user to the fiber reading screen with the fiber run number of FBR:13.

EDIT **5**
MNO - this option is used to re-test the currently displayed fiber run. Editing the current run overwrites the old power reading for the current run. This allows you to re-test a fiber without having to change any of the other data point information. When the new data point is saved, the user must re-enter the STORED READINGS menu.

PRINT **7**
STU - sends the current data point to the serial port in a printable format.

STORED READINGS MENU - OPTION 2: PRINT RANGE

Selecting **2**
DEF from the STORED READINGS menu brings you to the PRINT RANGE screen. This screen allows you to print selected data to the serial port in a printable format.

ACME - fiber link name.

NAME: - fiber label name.

PRINT ALL **F1** - prints all data points. After this command is executed, you will be returned to the STORED READINGS menu.

PRINT **F2** - print all data points pertaining to the current run label.

--> **F3** - scroll through all run labels for all stored fiber links.

```
ACME
NAME: FBR:

-----
PRINT | |
ALL | PRINT | -->
```

STORED READINGS MENU - OPTION 3: DELETE READINGS

Selecting **3** GHI from the STORED READINGS menu brings you to the DELETE READINGS screen. This screen allows you to select fiber labels and delete all of the associated data points.

NOTE: It is highly recommended to download the data points before erasing the data. Data erased this way cannot be retrieved from the meter in any way.

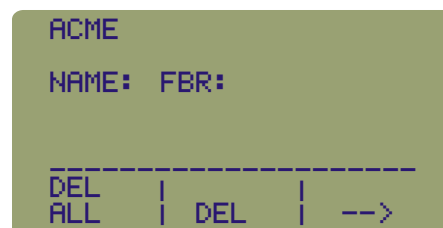
ACME - fiber link name.

NAME: - fiber label name.

DELETE ALL **F1** - deletes all stored readings from the meter. The user is then asked to verify deletion of all readings. After this command is executed, you will be returned to the STORED READINGS menu.

DEL **F2** - delete all data points pertaining to the current run label.

--> **F3** - scroll through all run labels for all stored fiber links.



STORED READINGS MENU - OPTION 4: DOWNLOAD DATA

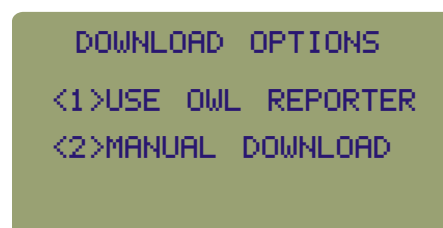
Selecting **4** JKL from the STORED READINGS menu brings you to the DOWNLOAD OPTIONS screen. This screen allows you to select the method of data download.

<1>USE OWL REPORTER - this option allows the user to download data points into our OWL Reporter certification report software. **NOTE:** You must have OWL Reporter 2.0 or later installed on your PC to download from this version of the Fiber OWL. If you have not installed OWL Reporter 2.0 or later, insert the CD that came with the meter into your CD-ROM drive, and follow the onscreen instructions. Follow the directions on the screen for OWL Reporter download.

1 - Press **1** ABC to begin. **NOTE:** The meter must be at the 'WAITING FOR CONNECTION TO PC' screen to download data into OWL Reporter.

2 - Connect the meter to your PC COM port via the supplied download cable.

3 - Run OWL Reporter on your PC. The shortcut for OWL Reporter is in the Start Menu, Programs, OWL folder.

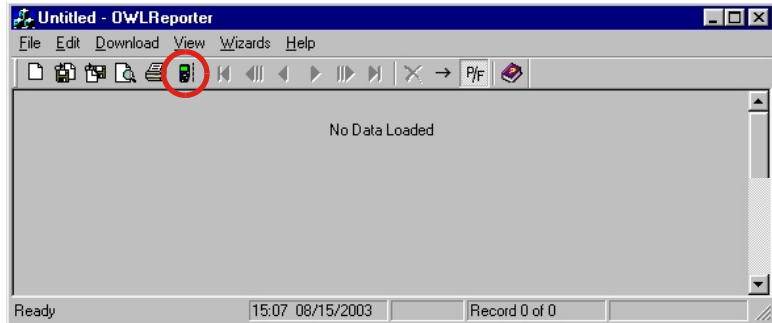


STORED READINGS MENU - OPTION 4: DOWNLOAD, Cont.

4 - Click the download button on the OWL Reporter software screen.

NOTE: A Fiber OWL full of data may take up to 2 minutes to download into OWL Reporter.

NOTE: If the PC cannot create a connection to the meter, a dialog box will appear in OWL Reporter. Check the cable connections and try again. If this problem persists, press **F1** to **ABORT DOWNLOAD** and contact OWL Tech Support for assistance.



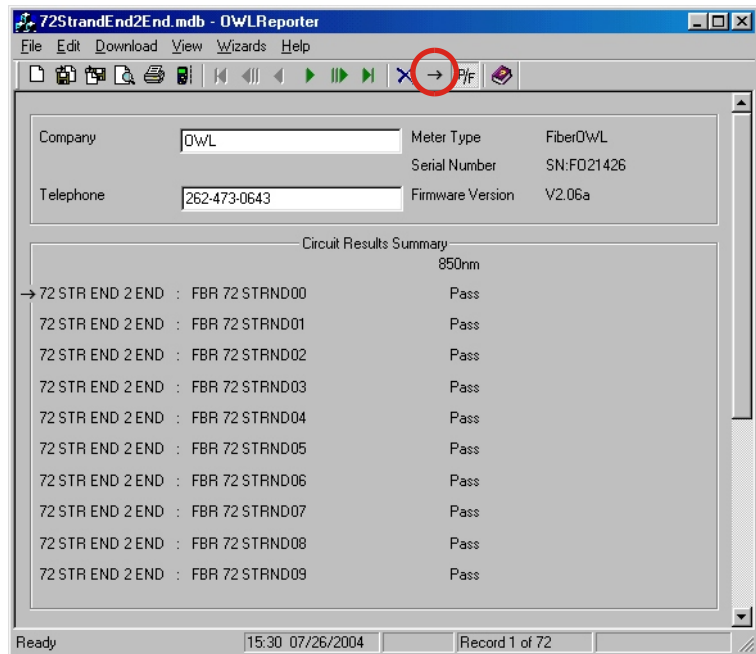
NOTE: Depending upon your version of Microsoft Windows, it may also necessary to install Direct Access Objects (DAO) from the installation CD. Typically, if you receive an error such as 'Invalid Command' or the meter appears to download the data, but no data appears on the screen, you will need to install DAO.

5 - Once all the data points are downloaded, you should see **DOWNLOAD COMPLETE** flash for a second. You will then be returned to the **STORED READINGS** menu.

OWL Reporter Summary View. By default, OWL Reporter opens up into Detail View. However, Summary view may be more useful for fiber loss test evaluation.

To switch between Summary View and Detail View, press the button that looks like an arrow, highlighted at the right. After you press this button, the view will change to look like the screen shot at the right.

This screen shows the Link ID, each stored data point, and whether the test passed or failed.



OWL Reporter Report Printing. To print the current view to a PC printer, press the print button highlighted at right to print the Summary report.

The printed report will look very much like the screen at the right. A sample report is located on the next page.

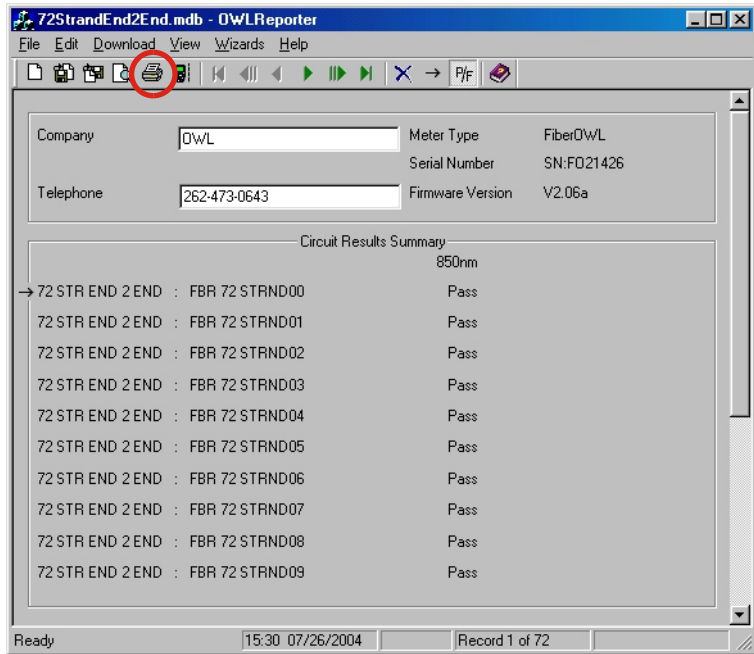
<2>MANUAL DOWNLOAD - this option allows the user to download data points to a PC in comma-delimited format. This data can be imported into a standard database or spreadsheet program.

1 - Connect the meter to your PC COM port via the supplied download cable.

2 - Open a terminal program on your PC. You will need to configure the COM settings, and set the program for data capture. Consult the appropriate manual for instructions.

3 - Once the PC is connected and configured for text capture, press **F1** to begin the download or **F3** to cancel.

4 - The terminal window will display the data as it is downloaded. Once the data stops scrolling, end the data capture. You will be returned to the STORED READINGS menu.



METER PROPERTIES MENU

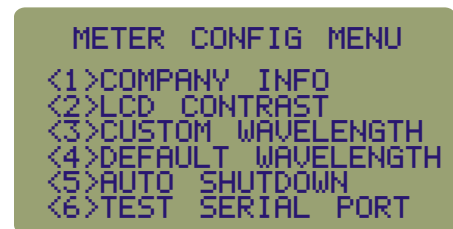
Press **4** JKL to enter METER PROPERTIES.

<1>COMPANY INFO - change the company name and company telephone number.

<2>LCD CONTRAST - adjust the LCD contrast for better readability.

<3>CUSTOM WAVELENGTH - configure the Fiber OWL with a light source wavelength that is not supported by the Fiber OWL. The custom wavelength must be between 700nm and 1700nm. NOTE: setting the custom wavelength overwrites 1480nm wavelength.

<4>DEFAULT WAVELENGTH - resets the default wavelength to 1480nm if a custom wavelength has been configured.



CIRCUIT SUMMARY PRINTOUT

At the right is an example of the Circuit Summary Report. Below are descriptions of the columns:

Circuit ID - this is the name of the fiber that was tested.

P/F - shows whether the test passed or failed.


850nm and *1300nm* - shows the amount by which the test passed or failed by at the wavelength tested.

Reports such as the one at right are useful for overall evaluation of a fiber links PASS/FAIL status.

Closer inspection of the PASS/FAIL values could reveal problems with individual fibers, or with termination, installation, or test methods.

For example, when looking at the values in the report at the right, notice that they vary from 1.20 dB to 5.61 dB. Because there is quite a large difference in the high and low numbers, this might indicate an inconsistency with fiber termination and polishing methods.

Poorly polished fiber connectors will produce additional loss and cause the PASS/FAIL margin to shrink. In our example, let us say that the customer requires a 2 dB safety margin. Thus, the fibers with less than 2 dB of margin should be re-evaluated.



Circuit Summary Report

Optical Wavelength Laboratories

Link ID:	FBR:	Page: 1
Company Name: OWL		Report Date: 08/26/2003
Telephone Number: 262-473-0643		

Circuit ID	Date	P/F	850nm	P/F	1300nm
01	08/22/2003	Pass	1.47dB	Pass	1.20dB
02	08/22/2003	Pass	4.45dB	Pass	3.19dB
03	08/22/2003	Pass	2.67dB	Pass	4.50dB
04	08/22/2003	Pass	5.10dB	Pass	2.51dB
05	08/22/2003	Pass	3.53dB	Pass	5.28dB
06	08/22/2003	Pass	5.61dB	Pass	1.74dB
07	08/22/2003	Pass	4.49dB	Pass	3.17dB
08	08/22/2003	Pass	4.98dB	Pass	4.98dB
09	08/22/2003	Pass	3.17dB	Pass	4.49dB
10	08/22/2003	Pass	1.74dB	Pass	5.61dB
11	08/22/2003	Pass	5.28dB	Pass	3.53dB
12	08/22/2003	Pass	2.51dB	Pass	5.10dB
13	08/22/2003	Pass	4.50dB	Pass	2.67dB
14	08/22/2003	Pass	3.19dB	Pass	4.45dB
15	08/22/2003	Pass	1.20dB	Pass	1.47dB

*1 - Manually set reference *2 - Fiber type mismatch *3 - Not covered by TIA standard

Installer/Tester: _____	Date: _____
Customer: _____	Date: _____

METER PROPERTIES MENU, Cont.

<5>AUTO SHUTDOWN - allows the user to toggle the Auto Shutdown feature between ON and OFF. By default, Auto Shutdown is ON, and is approximately 10 minutes.

<6>TEST SERIAL PORT - this option is used to diagnose problems with the serial cable included with the meter. If the meter cannot download to the PC, this option tests the meter's serial port and download cable. If these tests run okay, there may be a problem with the PC's COM ports.

Press **DONE** to return to the MAIN MENU.

TAKE READINGS

This option returns the user to the power reading display screen for the purpose of storing additional data points in the currently loaded link.

If you are resuming data storage on a fiber link after a period of inactivity, use this option to store data points. This will allow the user to resume data storage without having to run a completely new Fiber Link Wizard.

Keep in mind that if any characteristics of the fiber link change, then a new Fiber Link Wizard must be run.

Power Off

Press **OFF** to shut down the Fiber OWL. The user will be prompted to verify shutdown.

Appendix A - Decibel Review

Your Fiber OWL meter has a decibel(dB) range that spans 75dB. The whole purpose of your meter is to measure light energy in decibels. But what exactly is a decibel? It is not uncommon for a technician to be using an optical power meter and not understand what a decibel really is. If you struggle a little with this review, you will find the concept not so threatening.

This is what happens when we test a link: we send light of a specified wavelength from a stable light source down the fiber optic cabling. The meter then captures this light and measures it. As light travels down this path, however, its photons encounter impurities, connector gaps, and even the glass atoms themselves. All of these factors cause attenuation in the fiber. If there is too much attenuation, your fiber optic link will fail, because it does not have enough power to trigger the circuitry in the active receiver equipment. No communications can occur in this scenario.

Simply put, a decibel is a measure of the ratio of the power received at the end of a link relative to the power you started with, which is known. This fraction calculates the relative power. This calculation is similar to test scores or percentages.

$$\frac{\text{Amount of optical power left over at the end of the link}}{\text{Amount of optical power at the beginning of the link}} \times 100 = \text{Relative power out as a \%}$$

If test results were kept in percent or fractions, the average person wouldn't have difficulty in grasping the concept of decibels. Unfortunately, in scientific measurement, graphing power measurements has become too cumbersome due to their wide range of possible values; a person would need to paste lots of sheets of graph paper together to plot these power functions by hand. So scientists came up with a little trick to "squeeze" the graph down to a more presentable size. The trick uses logarithms (logs). Logs are fairly simple -- most of us have already encountered logs in pre-algebra class. They didn't seem so important then, but they are important to the understanding of decibels. Logs expressed in Base 10 are just a way to state how many zeros there are in a number.

For example, $\log(10)=1$, $\log(100)=2$, $\log(1000)=3$. Notice the pattern. Logs simply express how many places there are after the first number. Let's work with a number that isn't 10, 100, or 1000. For instance the $\log(2014)=3.304$. Notice that 2014 has three digits beyond the first, thus the "3" in the 3.304. Also notice how it relates to the "3" in $\log(1000)=3$. Remember, logs are a tool we use to "squeeze" our measurements down so they will fit on graph paper.

$$\text{LOG}\left(\frac{\text{Amount of optical power left over at the end of the link}}{\text{Amount of optical power at the beginning of the link}}\right) = \text{Relative power as a power of 10}$$

Power is measured in Watts (W), therefore:

$$10 \text{ LOG}\left(\frac{W_{\text{END OF LINK}}}{W_{\text{BEGINNING OF LINK}}}\right) = \text{Relative power as a power of 10}$$

Appendix A - Decibel Review, cont.

Mathematicians and scientists must have noticed that the shrinking effect of the graph was a little excessive. Logs in optical decibels get multiplied by 10. Thus we finally have:

$$\text{LOG}\left(\frac{W_{\text{END OF LINK}}}{W_{\text{BEGINNING OF LINK}}}\right) = \text{Relative power as a power of 10}$$

Remember: Decibels are simply the ratio of the power received by the receiver over the power sent out by the light source at the start of link.

There are other decibels to consider. The decibel we previously described is "dB" is called relative. This is because it is a ratio as was explained. With ratios there is no way to tell what absolute value we had at the start or end of a link. To solve the problem we can always reference our optical power to a fixed value of one milliwatt (1 mW). One milliwatt of power will replace the denominator of our equation.

$$10 \text{ LOG}\left(\frac{W_{\text{END OF LINK}}}{1 \text{ mW}}\right) = \text{Absolute power in dB}$$

So when we are given a value of absolute power in dBm we know that it is the power relative to 1 mW and we can calculate the actual power in mW if necessary. We can also compare values in dBm to each other because they are relative to the same reference (1mW). However, we cannot compare values in dB to each other because we do not know if they are relative to the same reference.

Appendix B - Dynamic Range Review

Now that you have a clearer understanding of the decibel, we can begin to study the dynamic range feature of the Fiber OWL. The dynamic range of the Fiber OWL is +5 to -70 dBm (or +25 to -70 dBm, but what exactly does this mean?

Dynamic range is defined as the difference between the minimum and maximum power levels that a photodetector can reliably sense, and still maintain acceptable accuracy. In the case of the Fiber OWL, the dynamic range is 75dB.

Any power level reaching the detector that is greater than +5 dBm is too powerful to accurately measure. Likewise, any power level below -70 dBm will be too weak to be sensed.

Power levels within the dynamic range produce acceptable readings. It is interesting to note that the Fiber OWL remains accurate over the upper 96% of the 75 dB dynamic range and then gets progressively worse as the power levels drop off.

The limits of dynamic ranges depend on certain factors. The minimum level depends on the sensitivity of the receiver. The sensitivity of the receiver can be increased by using different materials, such as germanium (Ge) or indium/ gallium/arsenide (InGaAs). The characteristics of these materials allows the detector to be responsive at lower power levels. The maximum level depends on both the size of the receiver area , and also the amplifier used.

Appendix C - Glossary

Absorption. The loss of power in an optical fiber, resulting from conversion of optical power into heat and caused principally by impurities, such as transition metals and hydroxyl ions, and also by exposure to nuclear radiation.

Acceptance Angle. The half-angle of the cone within which incident light is totally internally reflected by the fiber core. It is equal to $\arcsin(\text{NA})$.

Attenuation. A general term indicating a decrease in power from one point to another. In optical fibers, it is measured in decibels per kilometer at a specified wavelength.

Bandwidth. The transmission capacity of a system.

Buffering. 1. A protective material extruded directly on the fiber coating to protect the fiber from the environment (tight buffering). 2. Extruding a tube around the coated fiber to allow isolation of the fiber from stresses on the cable (loose buffered)

Buffer Tubes. Loose-fitting covering over optical fibers used for protection and isolation.

Bundle. Many individual fibers contained within a single jacket or buffer tube. Also, a group of buffered fibers distinguished in some fashion from another group in the same cable core.

Cladding. The outer concentric layer that surrounds the fiber core and has a lower index of refraction.

Connector. A mechanical device used to provide a means for aligning, attaching, and achieving continuity between fibers.

Consolidation Point. A location for interconnection between horizontal cables that extend from building pathways and horizontal cables that extend into work area pathways.

Core. The central, light-carrying part of an optical fiber; it has an index of refraction higher than that of the surrounding cladding.

Cross-Connection. A connection scheme between cabling runs, subsystems, and equipment using patch cords or jumpers that attach to connecting hardware on each end.

Decibel (dB). In fiber optics, a standard logarithmic unit for the ratio of the power that was received over the power that was originally sent.

dBm. Decibel referenced to a milliwatt.

dB μ . Decibel referenced to a microwatt.

Detector. An optoelectronic transducer used in fiber optics for converting optical power to electric current. In fiber optics, usually a photodiode.

Diffraction. The bending of radio, sound, or light waves around an object, barrier, or aperture edge.

Appendix C - Glossary, cont.

Dispersion. A general term for those phenomena that cause a broadening or spreading of light as it propagates through and optical fiber. the three types are modal, material, and waveguide.

Entrance Facility. An entrance to a building for both public and private network service cables including the entrance point at the building wall and continuing to the entrance room or space.

Equilibrium Mode Distribution (EMD). The steady modal state of a multimode fiber in which the relative power distribution among modes is independent of fiber length.

Equipment Room. A centralized space for telecommunications equipment that serves the occupants of the building. Equipment housed herein is considered distinct from a telecommunications closet because of its nature or complexity of the equipment.

Frequency. Of a periodic wave, the number of identical cycles per second. Usually expressed in Hertz.

Fresnel Reflection. The reflection that occurs at the planar junction of two materials having different refractive indices; Fresnel reflection is not a function of the angle of incidence.

Graded-index Fiber. An optical fiber whose core has a nonuniform index of refraction. The core is composed of concentric rings of glass whose refractive indices decrease from the center axis. The purpose is to reduce modal dispersion and thereby increase fiber bandwidth.

Horizontal Cross-Connect (HC). A cross-connect of horizontal cabling to other cabling, e.g., horizontal, backbone, equipment.

Index of Refraction. The ration of the velocity of light in free space to the velocity of light in a given material.

Insertion Loss. The loss of power that results from inserting a component, such as a connector or splice, into a previously continuous path.

Interconnection. A connection scheme that provides for the direct connection of a cable to another cable or to an equipment cable without a patch cord or jumper.

Intermediate Cross-Connect (IC). A cross-connect between the main cross-connect and the horizontal cross-connect in backbone cabling.

Laser. Light Amplification by Stimulated Emission of Radiation. A light source producing, through stimulated emission, coherent, near monochromatic light. Lasers in fiber optics are usually solid-state semiconductor types.

Light-Emitting Diode (LED). A semiconductor diode that spontaneously emits light from the PN junction when forward current is applied.

Main Cross-Connect (MC). The cross-connect in the main equipment room for connecting entrance cables, backbone cables, and equipment cables.

Appendix C - Glossary, cont.

Material Dispersion. Dispersion resulting from the different velocities of each wavelength in an optical fiber.

Modal Dispersion. Dispersion resulting from the different transit lengths of different propagating modes in a multimode optical fiber.

Mode. A possible path followed by light rays.

Multi-mode Fiber. A type of optical fiber that supports more than one propagating mode.

Numeric Aperture (NA). The number that expresses the light-gathering ability of a fiber.

Optical Time Domain Reflectometry (OTDR). A method of evaluating optical fibers based on detecting backscattered (reflected) light. Used to measure fiber attenuation, evaluate splice and connector joints, and locate faults. Also, the equipment used to perform such measurements (Optical Time Domain Reflectometer).

Photodetector. An optoelectronic transducer, such as a PIN photodiode or avalanche photodiode.

Photodiode. A semiconductor diode that produces current in response to incident optical power and used as a detector in fiber optics.

Photon. A quantum of electromagnetic energy; a particle of light.

Receiver. An electronic device which converts optical signals to electrical signals.

Responsivity. The ratio of a photodetector's electrical output to its optical input in an optical fiber.

Single Mode Fiber. An optical fiber that supports only one mode of light propagation above the cutoff wavelength.

Source. The light emitter, either an LED or laser diode, in a fiber optic link.

Spectral Width. A measure of the extent of a spectrum. For a source, the width of wavelengths contained in the output at one half of the wavelength of peak power. Typical spectral widths are 20 to 60 nm for an LED and 2 to 5 nm for a laser diode.

Splice. An interconnection method for joining the ends of two optical fibers in a permanent or semi-permanent fashion.

Step-Index Fiber. An optical fiber, either multi-mode or single mode, in which the core refractive index is uniform throughout so that a sharp step in refractive index occurs at the core-to-cladding interface. It usually refers to a multi-mode fiber.

Telecommunications Closet (TC). An enclosed space for housing telecommunications equipment, cable terminations, and cross-connects. The closet is the recognized cross-connect between the backbone cable and horizontal cabling.

Appendix C - Glossary, cont.

Tight Buffer. A cable construction where each fiber is tightly buffered by a protective thermoplastic coating to a diameter of 900 μ M.

Transmitter. An electronic package which converts an electrical signal to an optical signal.

Wavelength. The distance between the same two points on adjacent waves; the time required for a wave to complete a single cycle.

Work Area. A building space where the occupants interact with telecommunications terminal equipment; i.e. PCs, telephones, and other office equipment.

Appendix D - Fiber OWL Specifications

Detector Type	Ge (2mm)
Calibrated Wavelengths	850, 1300/1310, 1550
Additional Wavelengths	980, 1480
Measurement Range	+5 to -70 dBm (FO-2+) +25 to -50 dBm (FO-2C+)
Accuracy	± 0.15 dB
Resolution	0.01
Battery Life	up to 200 hours (9V)
Connector Type	Universal 2.5mm
Operating Temperature	-10 to 55 C
Storage Temperature	-30 to 70 C
Size	3.48"W x 6.48"H x 1.1"D
Weight	373g (12 oz.)
Data Storage Points	up to 900
Download Data Points	OWL Reporter Software
Absolute/Relative Measurements	Yes
Battery Capacity Display	Yes
Backlight	Yes
NIST Traceable	Yes

Appendix E - Warranty Information

Your Fiber OWL comes standard with a one-year limited warranty which covers the meter against manufacturing and assembly defects. Any returns not related to these types of defects are not covered under the warranty. Call tech support at (262) 473-0643 with any warranty concerns you may have.

Over time, the meter may lose its accuracy. This is natural for equipment of this type due to the electronic components used. Re-calibration may be necessary to restore the meter to its original accuracy. Re-calibration is not covered under warranty, but is offered as a service. Call OWL at (262) 473-0643 for more details on our re-calibration services.

Appendix F - Cleaning and Care Instructions

1 - Do NOT drop any piece of scientific equipment, e.g. the Fiber OWL. Damage may occur to the case or electronic components on the circuit board may become dislodged, and inaccuracy may occur.

2 - Keep the meter in its neoprene case when not in use. This will help protect the meter from the elements and accidental droppage.

3 - Store the meter in a cool dry area when not in use in order to keep the meter in top working condition.

4 - We recommend not removing the universal connector as it is not necessary for cleaning. Its parts are very fragile, small, and easy to lose.

5 - Always remember to replace the rubber cap on the connector. This will keep dust and dirt out of it when you are not using the meter.

6 - Use only 99% or better Isopropyl alcohol when cleaning the detector. Any less than 99% contains too much water and will begin to corrode the components. 99% Isopropyl alcohol is very flammable, so additional care must be taken when cleaning the detector. 99% Isopropyl alcohol can be purchased at your local drug store.

7 - Whenever possible, use specially designed 2.5mm cleaning sticks to clean the detector. These do not require alcohol and do not damage the insides of the connector. Do not use sticks or swabs of any other type because they may damage the zirconium ferrule or the coating of the detector inside the connector, or may leave behind dust or fibers that will add loss to the fiber reading.

8 - The detector port should be cleaned at the beginning and end of the testing day to keep connector loss during testing at a minimum.

9 - When cleaning the meter itself, do not use any household cleaner that contains ammonia as this will damage any plastic it comes in contact with.

10 - The case is splash-proof, so it is not necessary to clean the inside of the meter.

11 - Only use lint-free cloths. Anything else may scratch the plastic of the display.

Appendix G - Supported Cabling Standards

This version of Fiber OWL firmware supports the following fiber optic network cabling standards, and also supports 2 user-definable standards.

- EIA/TIA-568
- CAN-T529
- ISO/IEC 11801
- 1000Base-SX
- 1000Base-LX
- 100Base-FX
- 10Base-FL
- 10Base-FB
- FDDI
- ATM-155
- ATM-622
- Fibre Channel
- Token Ring

Link Budget Calculation Worksheet

Operating Wavelength Fiber Type

Calculate System Attenuation

Fiber Loss at Operating Wavelength (Distance x Fiber Loss)

Total Cable Distance _____ km
 Individual Fiber Loss (at operating wavelength) _____ dB/km
 Total Fiber Loss _____ dB
 Connector Loss (Connector Loss x Connector Pairs)
 Individual Connector Loss _____ dB
 Number of Connector Pairs _____
 Total Connector Loss _____ dB
 Splice Loss (Splice Loss x Splices)
 Individual Splice Loss _____ dB
 Number of Splices _____
 Total Splice Loss _____ dB
 Other Components _____ dB
 Total System Attenuation _____ dB

Calculate Link Loss Budget

Determine System Gain (Avg. Transmitter Power - Receiver Sensitivity)

Average. Transmitter Power _____ dBm
 Receiver Sensitivity _____ dBm @ 10^{-9} BER
 System Gain _____ dB

Power Penalties (Operating Margin + Receiver Power Penalties + Repair Margin # Splices at 0.3dB each)

Operating Margin _____ dB
 Receiver Power Penalties _____ dB
 Repair Margin _____ dB
 Total Power Penalty _____ dB

Determine Link Loss Budget (System Gain - Power Penalty)

System Gain _____ dB
 Total Power Penalty _____ dB
 Total Link Loss Budget _____ dB

Verify Performance

Verify Adequate Power (Total Link Loss Budget - Total System Attenuation)

Total Link Loss Budget _____ dB
 Total System Attenuation _____ dB
 System Performance Margin* _____ dB

* System Performance Margin must be greater than 0 dB in order for the system to operate using the specified electronics.