

OWL DWDM C-Band Optical Channel Monitor (OCM)

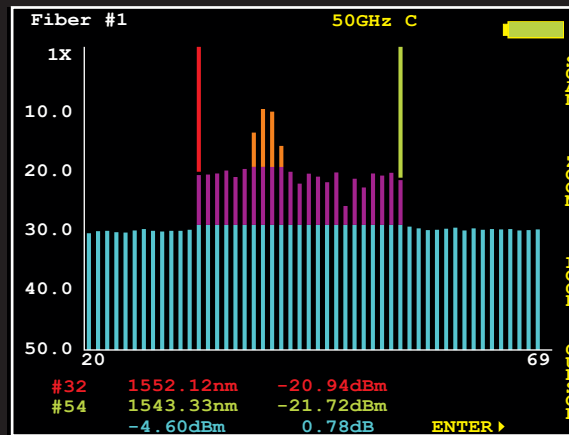
OWL's C-band Optical Channel Monitor (OCM) provides users with quick and accurate optical channel power measurement for DWDM networks using wavelengths specified in the ITU G.694.1.



The OWL Pocket DWDM OCM

was chosen by one of the largest telecom carriers in the US as part of an extremely large upgrade to their Telecom broadband infrastructure. After several years of field testing, the OWL OCM out-performed all other contesting brands. Is your company deploying or maintaining DWDM networks?

Call OWL today and let us know if you need a free field trial.



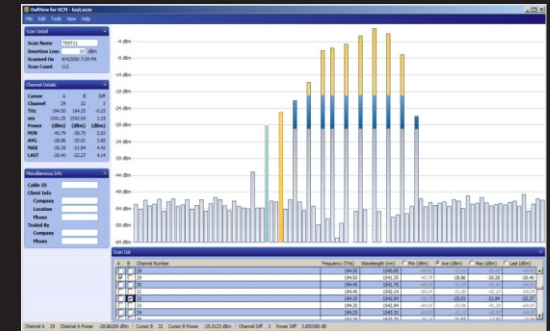
Display flips between portrait and landscape mode

Features include: Color graph showing user-definable optical power thresholds and channel data; Selectable start and end channel and channel spacing; Data storage and report generation; Re-chargeable lithium polymer battery; and USB interface.

Data can be viewed either as a bar graph or in tabular format, and the LCD display will automatically rotate based on the orientation of the OCM unit. Graph zoom and pan provides more viewing detail.

OwlView for OCM Software for Windows

OwlView for OCM software is included free with OWL optical channel monitor (OCM) products. Data can be downloaded from the OCM directly into the software with the download cable provided with your device. Once downloaded the data can be selectively viewed, printed, and saved using the intuitive, user-friendly graphical user interface.



All channels included in the scan data are shown as a bar graph, with editable channel thresholds. Data is also included in tabular format, showing the minimum, maximum, average and last optical power measurements for each channel taken during the scan.

OWLView for OCM software requires a Pentium-class PC or better running Windows.



Factory in the Heartland

Need a field trial?

Web: OWL-inc.com

Phone: 262-473-0643

OCM Reports

Call for Customization

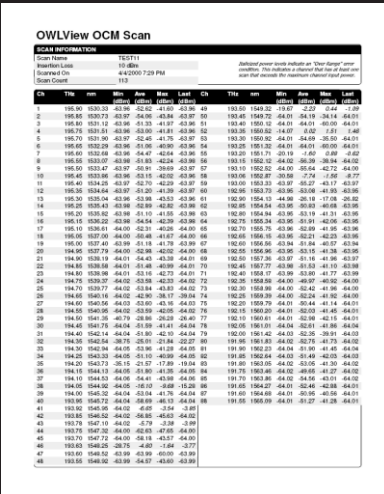
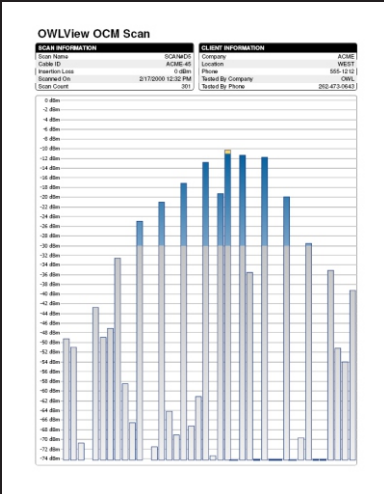


Optical Wavelength Laboratories



DWDM C-Band Reports

Printed or PDF test reports provide a record of the fiber link status.



Key Specifications:

Operating Frequencies*	191.35 to 196.10 THz (C-band)
Operating Wavelengths*	1566.72 to 1528.77 (C-band)
Total Channels (50GHz)	96
Nominal Channel Spacing	50 GHz
Channel Input Power	-10 to -40 dBm
Total Input Power	+7 dBm
Absolute Power Accuracy	1.0 dB
Relative Power Accuracy	1.0 dB
Total Power Accuracy	1.0 dB
Display Type	Backlit graphical LCD
Auto-shutdown	Yes
Battery Type	Lithium Polymer
Battery Life	up to 20 hours
Operating Temperature	-5 to 70° C
Operating Humidity	5 to 85%
Storage Temperature	-40 to 85° C
Storage Humidity	5 to 95%
Dimensions	2.87" x 4.42" x 1.25"
Weight	10 ounces (284 g)



DWDM



OCM

C-Band Optical Channel Monitor

Need Custom Hardware or Software?

Just give us a call!

OWL-inc.com
 Phone: 262-473-0643



Factory in the Heartland